

## **Historic, Archive Document**

Do not assume content reflects current scientific knowledge, policies, or practices.



62.67

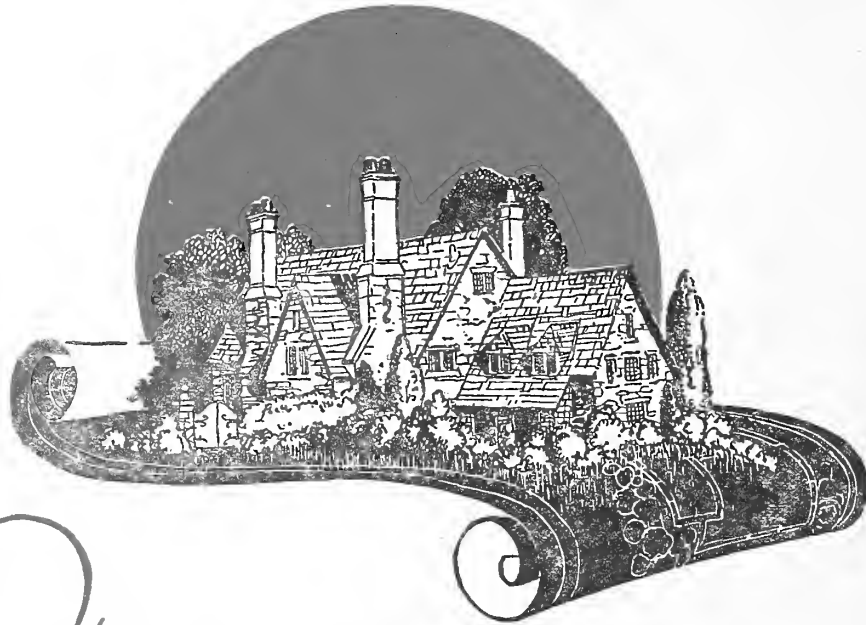
1951

U.S. DEPARTMENT OF AGRICULTURE  
BUREAU OF PLANT INDUSTRY  
WASHINGTON, D. C.



# LANDSCAPE - GARDENING

A BOOK WHICH POINTS THE  
WAY TO MORE ATTRACTIVE  
HOME SURROUNDINGS



WHETHER your home is a country estate with broad lawns and stately trees or the smaller suburban place with lawns and garden of smaller scale there is an opportunity for an expression of something truly fine in the landscape setting.

In the pages of this book you will find practical and helpful suggestions which point the way to the realization of beautiful home surroundings.

For many years The Independence Nurseries has been assisting home owners in obtaining suitable landscape improvements within their means and in keeping with their taste. On the basis of their long and practical experience they believe the suggestions contained here will be of practical value to you.

---

# WHAT *a beautiful* GARDEN MEANS TO YOU

*Infinitely more than the small cost of having  
your home Landscaped the Buskirk way*



ONLY those who have experienced the complete joy and satisfaction of owning a fine garden know how much it is worth while. The satisfaction of having your home complete to the last detail means infinitely more than the small cost necessary to make it so. When the grounds are improved and the garden is made you will find real satisfaction in knowing your fine home is given an appropriate setting and its pleasing lines and features suitably adorned and set off by planting. You will appreciate knowing the property you thought had possibilities turns out to be far more beautiful than you had ever dreamed. You will have the pride and satisfaction which comes to those who create things beautiful.

The joy of living in the out-of-doors is part of what a garden will mean to you. Think of the pleasure you will have in owning a charming home which your friends will delight to come to. And in affording your children with a harmonious and comfortable play space and bringing them up amidst beauty you will find a satisfaction which will more than repay you.

Whatever a beautiful garden means to you, we know you will appreciate the practical side of it. On the practical side, there is the increase of property values, always resulting from landscape improvements. There is the element of cost and values which you, in your own way, will want to consider. There is a practical, certain, and economical way of doing landscape work, which we believe you will be interested in. This is the Buskirk way, which is explained in these pages. The Independence Nurseries Co., have a complete service from planning with you to actual construction and completion of the work. They give you what you want and relieve you of worries and details. They give you the satisfaction of knowing your results will be successful and your garden will bring to you all that you expect, and more.



Every home grounds can be made into a source of joy and infinite pride to the owner through efficient landscape treatment.



In the garden one finds a perfect opportunity for ones play of fancy in choosing and arranging beautiful plants.

## OUR GARDENS EXPRESS *your* INDIVIDUALITY



THE home and its furnishings are personal things which express the individuality of the owner; so likewise is a garden. In the garden you will spend many happy hours, some in quiet enjoyment, some perhaps in "puttering" around in the flowers, and some in entertaining. The garden fills a big place in the scheme of things and the order of living. It is often located near the house, becoming almost a living room for many months of the year.

There are gardens many — formal gardens, wild gardens, flower gardens, rose gardens, water gardens, and no end of them, it seems. Whatever kind you have, or how many of them you have—they should reflect your tastes and give you satisfaction.

Why should we talk about individuality in the garden when your thoughts may not extend beyond a foundation planting? Because, in reality, every part of the grounds is a part of a garden, a "lawn garden" call it what you will. Every part of the landscape planting should have character and individuality and be a joy to live with.

Home owners more and more are realizing their need for assistance in this fascinating undertaking. Gardens, planned to express another's individuality, have charmed them, and prompted an inquiry into the methods responsible for such results, and if you have not ever questioned, we can assure you that fine gardens, gardens of character and personality, do not result from haphazard methods and poor materials. They are the result of careful planning, co-operation between the owner and architect and an efficient and complete landscape service.

The Independence Nurseries Co. offers you a complete landscape service. They can render you valuable service in design, planting and construction. With their aid, your garden will have a richness of material, a balance of design, a perfection of detail, and a character utterly appropriate to your home, fully expressive of your individuality.



## OUR LANDSCAPE ARCHITECTS PLAN WITH YOU

Acquaintance with a legion of home owners has taught us that they prefer us to plan "with" them rather than "for" them. We cannot say "the pleasure is all ours" and we do not want to for only when we can plan "with" our clients do we feel that we have been of the greatest service to them.

The men who plan with you are from our staff of trained landscape architects. They are experts in their line, who are ready to give you the benefit of their long training and experience. We respect the owner's ideas and try to give him exactly what he desires. However, as in anything else, technical training and practical experience are a valuable guide toward most effective results and a protection against mistakes. You save by being sure of your results and by avoiding costly experiment.

Back of these men is a company which for many years has been aiding home owners in the development of beautiful gardens and grounds. Out of these years of varied and conscientious service has come an experience which is of exceptional value to you who have a landscape problem. You will find Buskirk Service is a friendly service that tries above all, to please.

## NO PLACE TOO LARGE AND NONE TOO SMALL

The Buskirk organization is designed to meet every need of its clients whether the problem be ever so slight or require developments vast in scale. Their service is adaptable to every type of premises, in the city or suburbs, and of wide or limited area; in fact, the smaller the grounds, the greater the attention needed to every detail so as to produce the desired effect of space with some degree of seclusion. Many times the smaller home situated in medium sized grounds offers an equal or better opportunity for good landscape design than do the larger grounds.

Our organization has always given special consideration to work of this character and is appreciative of the opportunity to take up with you your planting problems, no matter how small your grounds may be. In large projects, where engineering and constructional problems are involved, our organization is able to adequately meet the demands of this character of work. Operating as we do on a large scale at all times it is possible to give service on all classes of landscape projects.



One can invest in landscape planting knowing that through the years he will have increased returns and greater satisfaction in his investment.

# OUR SERVICE is a COMPLETE SERVICE



To the last detail, Buskirk Service is complete. We make a study of your grounds and buildings, devise arrangements and select types of trees, shrubs, and plants best suited to the particular needs of your grounds. We supply and plant superior quality Independence grown stock. In fact, we do everything required in bringing out the maximum beauty possibilities of your buildings and grounds.

**The Plan Service:** In artistic landscape work, the plan is the thing. It represents a carefully planned scheme embodying the best thought of our landscape architects as applied to your particular problem. It serves as a basis for figuring. With a plan you can tell what you will get and we can tell you what it will cost. We particularly recommend the making of a complete plan for grounds of any size. The results are always more satisfactory. The artist can visualize the place as a whole and evolve a workable comprehensive scheme of promising worth and beauty. Then, if only part of the work is done at one time, it will be a step in the right direction, with no work to be done over. A good plan pays for itself in the end.

**Construction Service:** Another phase of our complete service comes in carrying out the proposed developments. Not only do we help you plan what you want, but we take the responsibility of seeing that you get it. The popularity of Buskirk service which accounts for its many years of growth, demonstrates the value of our construction service. A complete organization, second to none in experience, ability and personnel, materials and equipment to no end, are at our disposal.

**Our Nursery Service:** We maintain a big growing nursery where we produce the materials we use. Our nursery stock is especially grown to produce landscape effects without waiting. Our plants have a development of roots which enable them to take hold immediately without disturbance. A Buskirk planting is therefore not only expertly accomplished, but makes an exceptional showing in but a relatively short time.

## WE GUARANTEE ALL PLANTINGS

Our liberal guarantee protects you. Due to the high quality of the plants we grow and the effectual method we follow in planting, we guarantee our stock against loss for the year after planting, when the work is carried out under supervision of our planting experts. You take no chances in the work done by the Independence Nurseries Co.

We have found our guarantee to be popular with our customers. They know we take every reasonable precaution to have the work done right when we guarantee it in this manner. We assure you that the confidence our customers have in us will always prove to be justified.



With our specially grown plants our landscape architects can secure effects like this and transform a cold, bare house into an attractive home.





Garden pictures are the result of an idea skillfully executed by experienced landscape craftsmen.

## YOU KNOW EXACTLY WHAT THE COMPLETED COST WILL BE

**B**EFORE any home owner starts making landscape improvements, he has the right to know what the completed cost will be. Buskirk service is so organized we can tell what the cost will be and do the work planned within that cost. This is one of the features of our service which has proven immensely popular with our clients and accounts for the confidence they have in us.

A complete landscape development must be designed well, constructed well, and planted well. The materials used must be the best obtainable. It is easy to understand how the success of a landscape project depends directly on the successful combination of these different lines of effort. Where the design comes from one place, the construction from another, and the plants from any place they can be had, there are apt to be uncertainties as to cost and results.

Buskirk service is a complete service. By having all departments under one complete organization, disturbing consultations, uncertainties of cost, and results which go with other methods, are done away with. After we look over your property and make the plans, we can tell you just what it will cost, and it can be done for the figure we name. If there are any extras, it is only those requested by the owner. When the work is started, our organization provides everything in labor, material, and equipment, to complete it. The owner can have all the pleasure that should accompany this experience. With The Independence Nurseries Co. contracts, there is no worry.

In considering costs, there should rightfully enter the value of the service as well as the value of the results it gives. In buying the complete service of The Independence Nurseries Co., you obtain a complete service at one cost. This simplicity of detail, and completeness of service is of value to you. It saves you time and worry. It gives you more per dollar spent and is consequently worth more to you. Our many years of successful practice attest to the confidence our clients have in us. As in all buying of fine things, confidence is worth a good deal.



Such spots as these in any home grounds speak for real living, recreation and many hours of pleasurable enjoyment.

## THOSE FOR WHOM WE HAVE DONE WORK *are* FIRST *to* RECOMMEND US

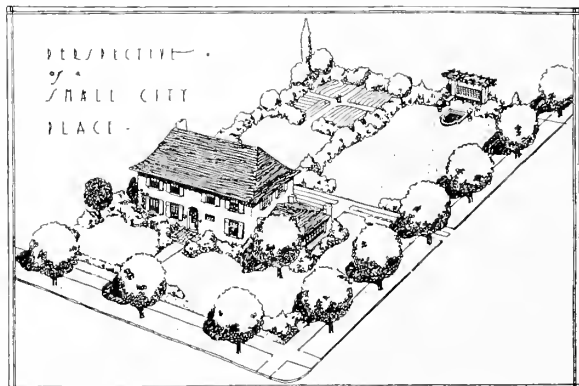


OR after all, the test of any service is in the friends it has made. You will find The Independence Nurseries Co. customers more than ready to recommend our work to you. We have met every conceivable landscaping problem during the many years we have been in business, and through it all have been imbued with the determination to place the name, The Independence Nurseries Co., in a position of respect.

The result of this craft pride has been satisfied customers without number, and the development of an ability which we know they would vouch for and which we know you will value if we are given the privilege of doing your work for you. In seeking your patronage, we therefore point to a past record which is your best assurance of satisfaction.

### BUSKIRK LANDSCAPE SERVICE *has* BROUGHT BEAUTY TO EVERY TYPE of PROPERTY *Including*

PRIVATE ESTATES	SUBDIVISIONS.
AND HOME GROUNDS,	COUNTRY CLUBS.
CITY OR SUBURBAN,	SCHOOLS.
LARGE OR SMALL.	FACTORIES.
PARKS AND	APARTMENT
CEMETERIES.	HOUSES.



# CONSULT WITH US *on* ANY TYPE of LANDSCAPE IMPROVEMENT

*Your Request will Receive Personal Attention*



H. W. Barger, Landscape Architect, and director of our landscape department.

OUR landscaping department is under the direction of H. W. Barger, Landscape Architect. In order to insure that all of our work has the high quality and good character upon which we build our reputation, Mr. Barger gives his personal attention to every project from start to finish. Through a highly specialized training and practical experience in landscape architecture, Mr. Barger is able as an authority to give you practical assistance in every type of landscape project.

Correct planting is an art. Even people of unquestioned good taste know that appreciating beauty and creating or developing beauty are two distinct accomplishments. We suggest, therefore, that you use our facilities for the development of landscape beauty in your grounds.

If you live in Cleveland, Akron, or their suburbs, it will cost you nothing to have a capable Independence Nurseries Co. representative call upon you. A visit will enable us to see what your opportunities are and talk them over with you in a helpful manner.

After work is completed we make seasonal inspection of our plantings to see that everything is all right. We suggest to you how to care for your trees and plants and help you realize the maximum in beauty from your investment.



A S BUSKIRK



D W BUSKIRK

Mr. A. S. Buskirk, Pres., and Mr. D. W. Buskirk, V.-Pres., have been responsible for the development of the Buskirk organization and products.



Here is an example of what can be accomplished with plant materials and water plants from the Independence Nurseries. Grounds of Memorial School, Cleveland, Ohio.

# OUR PLANTINGS *give* IMMEDIATE EFFECTS

IMMEDIATE effects with plant materials are necessary to gain the greatest joy in planting. If weak and undeveloped plants are used, the effect is bound to be disappointing for a number of years. One of the great factors of success in the Buskirk plantings is the use of their own materials specially grown to give immediate and lasting effects.

Fine specimens of plants are not produced in a day. It requires years of growth, expensive planting, and re-planting in the nursery row, careful training and giving enough space for each plant to develop as an individual specimen, to produce the class of material to create landscapes without waiting.



Our Evergreens are carefully balled and sewed in burlap to insure successful planting.

## WHY WAIT YEARS *for* PLANTS TO GROW?

The place for plant materials to develop into vigorous healthy specimens ready to carry on in an important place near the home, is in the nursery. Why wait years for plants to grow when you can get immediate effects with Independence grown material? The increased joy, the excellent and certain results, more than make up for the slight extra cost of materials specially handled.

## OUR BIG NURSERY *makes the growing of* LARGE PLANTS *possible*

With over 150 fertile acres of growing space, it is possible for us to give the space required for developing large sized dependable plants. We have for your selection one of the finest collections, both as to sizes and varieties of evergreens, trees, flowering shrubs, and perennials to be found anywhere in the middle west.

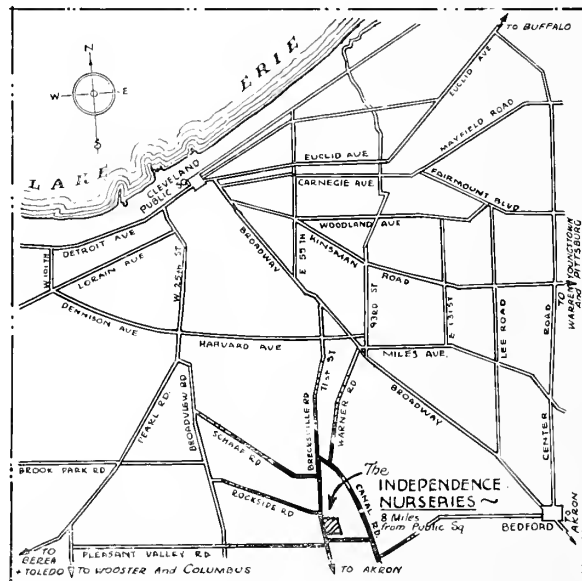
### PAY US A VISIT

COME and see us—we are proud of our nurseries and take pleasure in showing lovers of trees and plants how we grow and handle our plants. You are always welcome and you can drive out from any part of Cleveland in a short time.

Of special interest to our visitors is the part of our nurseries where we grow our waterlilies and aquatic plants. We have 150 growing pools where we produce choice waterlilies and other aquatics. Our aquariums have many unique and beautiful forms of gold fish and tropical fish which people from miles around come to see. A trip to The Independence Nurseries will be highly profitable for those who are interested in seeing a fine collection of plants and our unusual display of fishes.

#### How to Reach Us

Independence Nurseries are located 8 miles from the heart of Cleveland on the Brecksville Road, which is also the highway to Akron. You will find this map to be an accurate guide.



Follow the map to The Independence Nurseries

## EVERGREENS—*The Aristocrats of the Garden*

THE uses of Evergreens are many, so adaptable are they to the different requirements of landscape planting. Their beauty of form and color and their ability to give life and color to the winter landscape accounts for their charm and ever increasing popularity.

Here at Independence we grow many fine specimens of the choicest hardy varieties. Landscapes without waiting require big sizeable plants that will make an immediate showing. Few people realize how many years it takes to grow an evergreen. Our plants are carefully tended for years to give them perfection of size and form.

Quick growing varieties for screens; varieties with handsome form and color for foundation planting; others of stately growth for lawn specimens; dwarf varieties for foundation planting and ornamenting slopes. Almost anything anyone would want. A few of the most popular varieties we grow are listed here. Our nurseries are always available for your personal selection of varieties. Our Landscape organization can assist you in selecting, grouping and planting evergreens to get the most out of them. You will be well pleased with Independence evergreens.

### Abies—The Firs

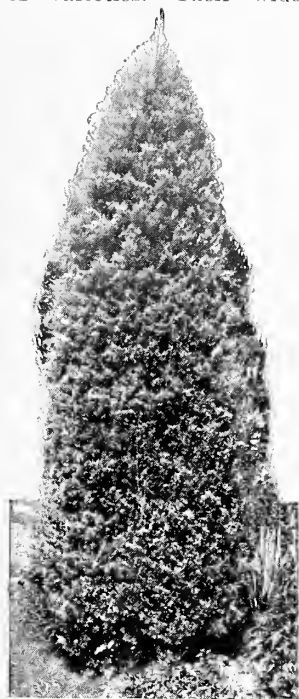
The fir trees make exquisitely beautiful specimens. The Silver Fir has an intense silvery gray foliage, similar to the Colorado Blue Spruce but softer in texture and its needles are much longer, broader and flatter than the spruce.

**BALSAM FIR.** (*Abies balsames.*) Aromatic fragrance. Brighter needles than spruce.

**SILVER FIR.** (*Abies concolor.*)

### Juniperus—The Junipers and Cedars

The Junipers offer a particularly pleasing group of varieties. Their wide range of color, form and habit makes them adaptable to all forms of planting, formal or informal. In any group of evergreens the junipers lend distinction and pleasing variation from the other evergreens. Four of the most popular and dependable varieties for general planting are Pfitzer juniper, Irish juniper, Savin juniper and the Red Cedar.



Red Cedar.

**GOLDEN CHINESE JUNIPER.** (*Juniperus chinensis aurea.*) Tips of the young leaves are golden in color.

**PFITZER JUNIPER.** (*Juniperus chinensis pfitzeriana.*) One of the best low-growing evergreens. Of semi-erect, yet gracefully drooping habit, with plumes of light green foliage touched with silver, it is greatly coveted for planting



Evergreens work particularly well with certain types of architecture. Surely a house such as this one is given a most appropriate setting with this carefully chosen grouping of evergreens.

about houses, in gardens, on slopes, in rockeries and in groups.

**COMMON JUNIPER.** (*Juniperus communis.*) Low spreading plant with clear green leaves.

**PROSTRATE JUNIPER.** (*Juniperus communis depressa.*) One of the best known of the prostrate Junipers.

**GOLDEN PROSTRATE JUNIPER.** (*Juniperus communis depressa aurea.*) A golden form.

**IRISH JUNIPER.** (*Juniperus communis hibernica.*) Compact, upright in growth.

**SAVIN JUNIPER.** (*Juniperus sabina.*) A highly desirable dwarf form. Consists of clusters, semi-erect, spreading branches, with soft, fine dark green foliage in frond-like effects. Used for borders, groups, rockeries and slopes.

**TAMARIX JUNIPER.** (*Juniperus sabina tamariscifolia.*) A lower growing form than the above.

**RED CEDAR.** (*Juniperus virginiana.*) Native throughout America. Foliage rich bronzy green in maturity; grayish in juvenile form. The texture is close and fine. Being the only American evergreen to resemble the Italian Cypress, the Red Cedar is extensively used for garden effects, but is also adaptable for informal or naturalistic plantings. It is most effective when used for framing doorways, gateways and buildings. Average maximum height, 30 feet.

**SILVER RED CEDAR.** (*Juniperus virginiana glauca.*) The foliage is of a decided blue color.

**WAUKEGAN JUNIPER.** (*Juniperus horizontalis douglasi.*) Low and compact; making a dense mat over the surface of the ground.

**Picea—The Spruces**

These handsome symmetrical trees always look fine in any planting. The Black Hill Spruce, with its dense growth, grayish green foliage and the Norway Spruce are two of the leading varieties.

**AMERICAN WHITE SPRUCE.** (*Picea alba*.) An extremely hardy and valuable evergreen.

**BLACK HILLS SPRUCE.** (*Picea canadensis*.) A virile, hardy spruce which stands well under exacting conditions of exposure. Valuable for use as hedge, windbreak or screen. Foliage grayish green, dense.

The cones of purplish lustre in spring are very attractive.

**NORWAY SPRUCE.** (*Picea excelsa*.) One of the most extensively planted evergreens grown. It is a tall picturesque tree with a great charm when used in groups of either deciduous or evergreen trees. Very useful for hedge, screen and wind-break purposes. Attains heights of 50 feet or more at maturity.

**ORIENTAL SPRUCE.** (*Picea orientalis*.) Compact and shapely, for specimen planting.

**COLORADO SPRUCE.** (*Picea pungens glauca*.) The famous Colorado blue spruce.

**Pinus—The Pines**

The pines are useful where larger trees are suitable. For backgrounds, screens or planting as specimens on the lawn, the pines always look well. The low-growing Mugho Pine is one of the best dwarf evergreens for foundation planting. The Austrian is one of the finest of the larger growing type.



Savin Juniper.

**PINUS MONTANA.** Semi-dwarf, ascending branches, densely clothed with bright green foliage.

**MUGHO PINE.** (*Pinus montana mughus*.) The most popular of all dwarf evergreens. Invaluable for use about the house, in gardens, borders, masses. Very hardy. Available either in loose or compact form. Seldom exceeds 3 to 4 feet in height. Needles dark green, short, in pairs.

**AUSTRIAN PINE.** (*Pinus nigra*.) Native forest tree of Europe, having a broad crown of dark green foliage at maturity, with an average full

height here of about 50 feet—often less. Its needles are in pairs, and are about four inches long, rigid, somewhat twisted, and sharp-pointed. Austrian Pine is one of the most rapid-growing of the evergreens, and retains its lowest branches, so that it is unusually desirable for screen or boundary planting, and also makes a good specimen.

**WHITE PINE.** (*Pinus strobus*.) Grows to a towering height.

**SCOTCH PINE.** (*Pinus sylvestris*.) A very fine tree, growing to large size.

**The Retinospora**

The graceful plumelike character of the Plume Cypress makes it a most pleasing specimen. The Thread Cypress shows what a marked variation there may be within the same group of evergreens.

**THREAD CYPRESS.** (*Retinospora filifera*.) An unusual evergreen with long stringy foliage, drooping gracefully from all sides. Slow growing and very desirable.



Evergreens and deciduous shrubs can be skillfully blended to make an attractive all year planting.



Pleasing first impressions are certain when the door yard is planted with evergreens.

**GOLDEN THREAD CYPRESS.** (*Retinospora filifera aurea.*) Light, airy, golden foliage.

**SAWARA RETINOSPORA CYPRESS.** (*Retinospora pisifera.*) A splendid bushy variety.

**GOLDEN SAWARA CYPRESS.** (*Retinospora pisifera aurea.*) Golden tipped branches.

**PLUME CYPRESS.** (*Retinospora plumosa.*) The foliage of this is a greyish green very fine cut and has a feathery appearance. It resembles a fine cut fern frond at certain stages of its development. Pyramidal in habit of growth and if kept sheared as all varieties of this family should be, in foundation planting it will make a wonderful specimen.

**GOLDENPLUME CYPRESS.** (*Retinospora plumosa aurea.*) Plumelike foliage tipped with gold.

**RETINOSPORA squarrosa.** Soft feathery foliage, silvery gray.



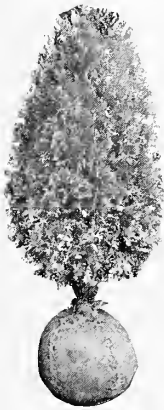
Globe Arborvitae

#### Taxus—The Yew

A dark green of low value and shade resistant quality characterizes the Yews. They are of distinct value in the finest of plantings.

**ENGLISH YEW.** (*Taxus baccata.*) One of the hardiest yews; rich green.

**CANADA YEW.** (*Taxus canadensis.*) Fine dark-green foliage and scarlet berries.



American Arborvitae

#### Thuja—The Arborvitae

The Arborvitae is much used in all evergreen plantings. Its regularity of outline makes it particularly useful in formal plantings in gardens or at entrances. The American, Globe and Vervaeene varieties we list as three of the most attractive.

**AMERICAN ARBORVITAE.** (*Thuja occidentalis.*) Native of the northeastern part of the U. S. It is of compact, pyramidal habit similar to the Red Cedar, but coarser in texture and of brighter green color. The flat sprays of appressed scale-like leaves are

distinctive. The color usually changes to dull bronze green in winter. Arborvitae is much used for hedges, and also for specimens and as accents in groups or borders. A large number of horticultural varieties are available for garden use.

**DOUGLAS GOLDEN AMERICAN ARBORVITAE.** (*Thuja occidentalis aurea douglasi.*) Beautiful golden tint.

**TOM THUMB ARBORVITAE.** (*Thuja occidentalis ellwangeriana.*) A most fascinating rounding form.

**HEATH RETINOSPORA.** (*Thuja occidentalis ericoides.*) Of pleasing form.

**AMERICAN GLOBE ARBORVITAE.** (*Thuja occidentalis globosa.*) Dwarf globe form for low hedges in gardens or as speci-

mens or accents. A dense, compact type that pleases the eye.

**HOVEY ARBORVITAE.** (*Thuja occidentalis hoveyi.*) A low growing form, dense and compact.

**GEORGE PEABODY ARBORVITAE.** (*Thuja occidentalis lutea.*) A bright golden yellow form of dense habit.

**PYRAMIDAL ARBORVITAE.** (*Thuja occidentalis pyramidalis.*) Foliage light-green; columnar form.

**VARVAENE ARBORVITAE.** (*Thuja occidentalis vervaeneana.*) Of low, dense, ovate pyramidal form, with slender branchlets and a golden tinge throughout.

**WARE ARBORVITAE.** (*Thuja occidentalis wareana.*) One of the most desirable of the pyramidal arborvitae, growing in compact form.

**ORIENTAL ARBORVITAE.** (*Thuja orientalis. Biotia orientalis.*) A pyramidal evergreen, with bright green leaves.

#### Tsuga—The Hemlock

**CANADA HEMLOCK.** (*Tsuga canadensis.*) A native forest tree in the eastern half of the U. S. Its indescribably graceful habit and dense, soft foliage combine to form one of the most beautiful evergreens used in ornamental planting. Will endure shade.



Evergreens show off particularly well against white backgrounds.



Shade trees contribute to the comfort and enjoyment of the grounds all through the year. A careful selection and placing of varieties will create pictures such as this.

## TREES *for* IMMEDIATE EFFECTS

**I**N PLANTING the home grounds it is little wonder that the first thought is usually about trees. They are the first essential as the comfort derived from their shade and protection alone makes them a necessity. And, at the same time, the intrinsic beauty of the tree gives it a value everyone appreciates. The home with beautiful trees is always the most charming and most valuable possession.

In the large group of trees available for planting there are naturally some more adaptable to certain uses than others. In our landscape planting, careful attention is given to the selection of trees to get the right variety in the right place. Full appreciation of each tree's value and character as well as its artistic merit enables us to assist you to get the best out of your planting.

In our nurseries we grow specimen trees for immediate effects. Their roots have been pruned as they grow to develop a compact root system. This enables the trees to keep right on growing when they are moved. A good planting of trees will fairly "make a place."

A few of the choice varieties we grow for immediate effects are listed here—we will be glad to assist you in any way we can to get the right trees for your place.

### Acer—The Maples

SILVER MAPLE. (*Acer dasycarpum*.)  
WIER'S CUTLEAF WEEPING MAPLE. (*Acer dasycarpum wieri laciniatum*.)

NORWAY MAPLE. (*Acer platanoides*.)  
SYCAMORE MAPLE. (*Acer pseudoplatanus*.)  
SUGAR MAPLE. (*Acer saccharum*.)

### Aesculus—The Horse-Chestnuts

OHIO BUCKEYE. (*Aesculus glabra*.)  
HORSE-CHESTNUT. (*Aesculus hippocastanum*.)  
TREE OF HEAVEN. (*Ailanthus glandulosa*.)

### Betula—The Birches

EUROPEAN WHITE BIRCH. (*Betula alba*.)  
CUTLEAF WEEPING BIRCH. (*Betula alba laciniata pendula*.)

### Carpinus—Hornbeam

AMERICAN HORNBEAM. (*Carpinus caroliniana*.)

### Catalpa—The Catalpas

MANCHURIAN CATALPA. (*Catalpa bungei*.)  
WESTERN CATALPA. (*Catalpa speciosa*.)

### Katsura Tree

KATSURA-TREE. (*Cercidiphyllum japonicum*.)

### Cornus—The Dogwoods

FLOWERING DOGWOOD. (*Cornus florida*.)  
REDFLOWERING DOGWOOD. (*C. florida rubra*.)

### Fagus—The Beech

AMERICAN BEECH. (*Fagus americana*.)



# LANDSCAPE ARCHITECTS

INDEPENDENCE, OHIO

## Fraxinus—The Ash

WHITE ASH. (*Fraxinus americana*.)  
EUROPEAN ASH. (*F. excelsior*.)

## Ginkgo—Maidenhair Tree

MAIDENHAIR. (*Ginkgo biloba*.)

## Gleditschia—Honey Locust

HONEY LOCUST. Common. (*Gleditschia triacanthos*.)

## Sweet Gum

SWEET GUM. (*Liquidambar styraciflua*.)

## Nut Trees

NUT BEARING TREES. We grow several varieties of nut bearing trees which bear edible nuts.

## Tulip Tree

TULIP TREE. (*Liriodendron tulipifera*.)

## Magnolia—The Magnolias

CUCUMBERTREE. (*M. acuminata*.)  
SWEETBAY. (*Magnolia glauca*.)  
KOBUS MAGNOLIA. (*M. kobus*.)

## Planetree

EUROPEAN PLANETREE. (*Platanus orientalis*.)

## Populus—The Poplars

LOMBARDY POPLAR. (*Populus nigra italica*.)  
BOLLEANA POPLAR. (*Populus bolleana*.)

## Malus—Flowering Crabs

SIBERIAN CRAB. (*Malus baccata*.)  
PARKMAN'S HALL CRAB. (*M. halliana parkmani*.)  
BECHTEL'S PRAIRIE CRAB. (*M. ioensis bechteli*.)

## Morus—Mulberry

MULBERRY WEEPING. (*Morus alba pendula*.)

## Quercus—The Oaks

WHITE OAK. (*Quercus alba*.)  
SCARLET OAK. (*Quercus coccinea*.)  
PIN OAK. (*Quercus palustris*.)  
COMMON RED OAK. (*Quercus rubra*.)



The maples make splendid shade trees for the lawn.

## Salix—Willow

BABYLON WEEPING WILLOW. (*Salix babylonica*.)  
LAUREL WILLOW. (*Salix pentandra*.)  
RUSSIAN GOLDEN WILLOW. (*Salix vitellina aurea*.)

## Sorbus—Mountain Ash

EUROPEAN MOUNTAIN ASH. (*Sorbus aucuparia*.) Fine specimen tree, brilliant scarlet berries.

## Tilia—The Lindens

AMERICAN LINDEN. (*Tilia americana*.)  
LITTLELEAF EUROPEAN LINDEN. (*Tilia cordata*.)

## Ulmus—The Elms

AMERICAN ELM. (*Ulmus americana*.) The handsomest of our lawn or street trees.  
ENGLISH ELM. (*Ulmus campestris*.)



## REES — FOR SPECIAL PURPOSES

Choke-Cherry  
Bird Cherry  
Cucumber Tree

### TREES WITH ATTRACTIVE FLOWERS AND FRUIT

Lindens  
Chinese Cork Tree  
Flowering Crabs

Hawthorns  
Tulip Tree  
Double-flowering Plums

Mountain Ash  
Horse-Chestnut  
Native Catalpa

Tulip Tree  
Chinese Cork Tree

### FINE TREES FOR LAWNS

Cut-leaved Maple  
White Birch

Purple Norway Maple  
Copper Maple

### TREES WITH COLORED FOLIAGE IN SUMMER AND AUTUMN

Acacia  
Bronze Ash  
Ginkgo

Tree of Heaven  
Cut-leaved Birch  
Silver-leaved Linden

Cut-leaved Maple  
Laurel-leaved Willow  
Purple Norway Maple

Copper Maple  
Sugar Maple

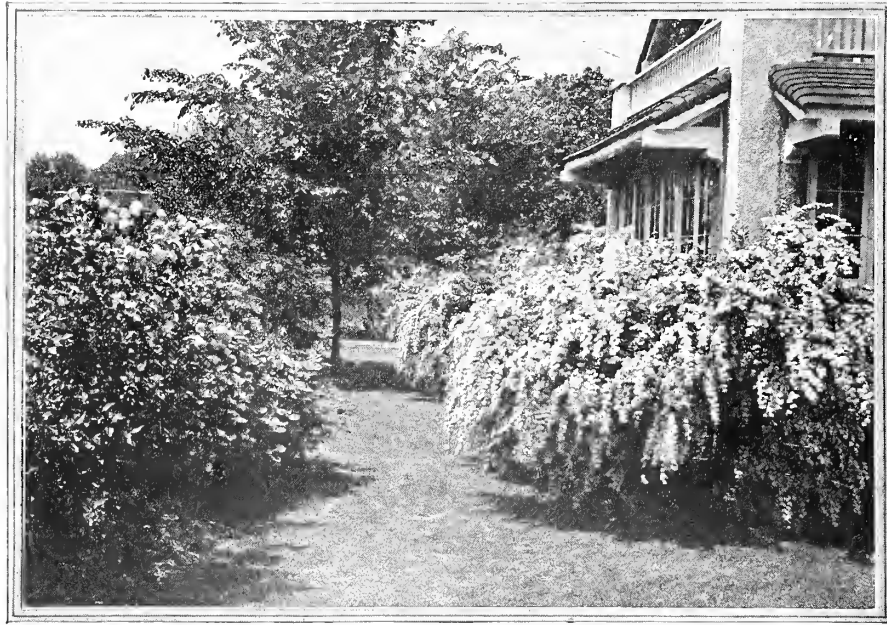
### DROOPING OR WEEPING TREES

Cut-leaved Birch  
Weeping Willow  
Weeping Mulberry  
Cut-leaved Maple

### TREES FOR QUICK EFFECT

Carolina Poplar  
Lombardy Poplar  
Silver Maple  
Cut-leaved Maple  
Tree of Heaven  
Native Catalpa






The billows of snowy white flowers of Van Houtte's *Spiraea* always excite admiration. A carefully arranged shrub planting gives a succession of flowering effects.

## SHRUBS *for* FLOWER *and* FOLIAGE

SPECIALLY GROWN VARIETIES *for* LANDSCAPES WITHOUT WAITING

 SHRUB planting is such an important detail in the landscape scheme, a large portion of our nurseries are devoted to growing fine large specimens of the choicest varieties. Plants which do not have to be crowded to make a showing are always the best to use to gain an immediate effect.

There are shrubs suitable for every purpose. A carefully studied plan provides shrubs which give a continuous season of flower; shrubs with berries attractive in winter and summer; shrubs with bright colored twigs to cheer the winter landscape. The ideal way is to choose and blend the many available subjects into a pleasing all year picture.

Too many homes are content with a few of the commoner sorts "done to death" at every corner. Homes of distinction merit the choicest varieties and plantings from our stock of big bushy specimens.

Each home has its own particular opportunity for shrub plantings which do justice to the home and its owner. It is part of our service to assist our customers in realizing the ultimate in harmonious plantings that they may be proud of an individual achievement.

Briefly we list and describe some of the varieties we use.

### Aralia—The Aralia

FIVE-LEAVED ARALIA. (*Aralia pentaphyllum*.)  
DEVILS-WALKINGSTICK. (*Aralia spinosa*.)

### Amelanchier—Shadblow

DOWNY SHADBLOW. (*Amelanchier canadensis*.)  
Beautiful white flowers.

### Amygdalus—The Flowering Almond

ALMOND, PINK - FLOWERING.  
(*Amygdalus communis*.)

ALMOND, WHITE-FLOWERING.  
(*Amygdalus communis*.)

### Aronia—The Chokeberry

RED CHOKEBERRY. (*Aronia arbutifolia*.) Red berries.

BLACK CHOKEBERRY. (*Aronia melanocarpa*.)

### Azalea

FLAME AZALIA. (*A. calendulacea*.) A broadleaf evergreen.

### Spicebush

SPICEBUSH. (*Benzoin aestivale*.)



Pink flowering almond.

# LANDSCAPE ARCHITECTS

INDEPENDENCE, OHIO

## Berberis—Barberry

JAPANESE BARBERRY. (*Berberis thunbergi*.)  
 BOX BARBERRY. (*Berberis thunbergi minor*.)  
 PURPLE BARBERRY. (*Berberis atropurpurea*.)

## Buddleia—Butterflybush

BUTTERFLYBUSH. (*Buddleia davidi*.) Long spikes of fragrant light-blue flowers.

## Beautyberry

JAPANESE BEAUTYBERRY. (*Callicarpa japonica*.) Flowers pink, followed by violet berries.

## Sweetshrub

COMMON SWEETSHRUB. (*Calycanthus floridus*.)

## Caragana—Pea Tree

SIBERIAN PEA-TREE. (*Caragana arborescens*.)

## Redbud

AMERICAN REDBUD. (*Cercis canadensis*.)

## Summersweet

SUMMERSWEET. (*Clethra alnifolia*.)

## Cornus—The Osier Dogwoods

VARIEGATED CORNELIAN-CHERRY. (*Cornus alba elegantissima*.)  
 OSIER DOGWOOD. (*Cornus alba spaethi*.)  
 SILKY DOGWOOD. (*Cornus amomum*.)  
 GRAY DOGWOOD. (*Cornus paniculata*.) Gray bark.  
 BLOODTWIG DOGWOOD. (*Cornus sanguinea*.)  
 GREENTWIG DOGWOOD. (*C. stolonifera lutea*.)

## Hazelnut

AMERICAN HAZELNUT. (*Corylus americana*.)



Barberry used in front of evergreens.

## Cotoneaster

SPREADING COTONEASTER. (*C. divaricata*.)  
 ROCK COTONEASTER. (*Cotoneaster horizontalis*.)  
 SIMONS COTONEASTER. (*Cotoneaster simonsi*.)

## Cydonia—The Quince

FLOWERING QUINCE. (*Cydonia japonica*.)

## Crataegus—The Hawthorn

COCKSPUR THORN. (*Crataegus crusgalli*.)  
 ENGLISH HAWTHORN. (*Crataegus oxyacantha*.)

## Bushclover

PURPLE BUSHCLOVER. (*Desmodium penduliflorum*.) Purplish pea-like flowers.

## SELECTED SHRUBS for YARD and GARDEN



Lilacs.

### FRUIT-BEARING SHRUBS

Bittersweet  
 Hawthorn  
 Honeysuckles  
 Elder  
 Coral Berry

Euonymus  
 Cornelian Cherry  
 Viburnums  
 Buckthorn  
 Juneberry

Kerria  
 Privets  
 Elder  
 Russian Olive  
 Coral Dogwood

### SHRUBS ENDURING PARTIAL SHADE

American Black Currant  
 Coral Berry  
 Golden St. Johns-Wort  
 European Burning Bush  
 Ninebark Spirea  
 Mock Orange  
 Five-leaved Aralia  
 Border Forsythia (Golden Bell)

Privet  
 Snowberry  
 Southern Bush Honeysuckle  
 Snowhill Hydrangea  
 Elder  
 Dogwood  
 Cranberry Bush

### SHRUBS WITH ATTRACTIVE TWIGS IN WINTER

Coral Dogwood  
 Winged Euonymus

Golden-twig Dogwood

Kerria  
 European Burning Bush

### SHRUBS FOR HEDGES

Amur River Privet  
 Buckthorn  
 Russian Mulberry  
 Bridal Wreath Spirea

California Privet  
 Regel Privet  
 Glossy Buckthorn  
 Lilacs

Russian Olive  
 Hawthorn  
 Japanese Barberry  
 Southern Bush Honeysuckle



Golden Bell.

**Deutzia—The Deutzias**

- SLENDER DEUTZIA. (*Deutzia gracilis*.)
- PINK SLENDER DEUTZIA. (*Deutzia gracilis rosea*.) Similar to above with flowers tinted pink.
- LEMOINE DEUTZIA. (*Deutzia lemoinei*.)
- FUZZY DEUTZIA. (*Deutzia scabra*.)
- SNOWFLAKE DEUTZIA. (*D. scabra candidissima*.)
- PRIDE OF ROCHESTER. (*Deutzia scabra*.)
- DOUBLE ROSE DEUTZIA. (*D. scabra rosea plena*.)

**Diervilla—Honeysuckle**

- SOUTHERN BUSH-HONEYSUCKLE. (*Diervilla sessilifolia*.)

**Elaeagnus—Russian Olive**

- RUSSIAN OLIVE. (*Elaeagnus angustifolia*.) A fine tall growing shrub with silvery-green foliage and yellow flowers. Hardy and vigorous.

**Euonymus**

- WINGED EUONYMUS. (*Euonymus alatus*.)
- BROOK EUONYMUS. (*E. americanus*.)
- WAHOO. (*Euonymus atropurpureus*.)
- EUROPEAN BURNINGBUSH. (*E. europaeus*.)

**Exochorda—Pearlbush**

- PEARLBUSH. (*Exochorda grandiflora*.) Beautiful and covered with fragrant clusters.

**Forsythia—The Golden Bell**

- BORDER FORSYTHIA. (*Forsythia intermedia*.)



Deutzia, Pride of Rochester, D. Scabra.



Even on the small lot there is need for foundation planting such as this. A few plants from our nurseries wisely chosen, will produce splendid results.

- WEeping FORSYTHIA. (*Forsythia suspensa*.)
- FORTUNE FORSYTHIA. (*F. suspensa fortunei*.)
- GREENSTEM FORSYTHIA. (*F. viridissima*.)

**Witch-Hazel**

- COMMON WITCH-HAZEL. (*Hamamelis virginiana*.)

**Hibiscus—The Althea**

- SHRUB ALTHEA. (*Hibiscus syriacus*.) A compact erect shrub with abundant flowers in many colors.

**Hippophae—Sea-Buckthorn**

- COMMON SEA-BUCKTHORN. (*Hippophae rhamnoides*.)

**Hydrangea—The Hydrangeas**

- SMOOTH HYDRANGEA. (*Hydrangea arborescens*.) A magnificent bush of medium height, with masses of white flower-heads, like large Snowballs.
- PANICLE HYDRANGEA. (*Hydrangea paniculata*.)
- PEEGEE HYDRANGEA. (*Hydrangea paniculata grandiflora*.)

**Hypericum—St. Johnswort**

- GOLDEN ST. JOHN SWORT. (*Hypericum aureum*.)
- SHRUBBY ST. JOHN SWORT. (*H. prolificum*.)

**Kerria**

- KERRIA JAPONICA. (*Corchorus japonicus*.)

**Ligustrum—The Privets**

- CALIFORNIA PRIVET. (*Ligustrum ovalifolium*.)
- AMUR PRIVET. (*Ligustrum amurense*.)
- IBOTA PRIVET. (*Ligustrum obtusifolium*.)
- REGEL PRIVET. (*Ligustrum ibota regelianum*.)
- EUROPEAN PRIVET. (*Ligustrum vulgare*.)

**Lonicera—The Honeysuckle**

- WINTER HONEYSUCKLE. (*Lonicera fragrantissima*.) Delightfully fragrant white flowers.
- AMUR HONEYSUCKLE. (*Lonicera maackii*.)

# LANDSCAPE ARCHITECTS

INDEPENDENCE, OHIO

MORROW HONEYSUCKLE. (*Lonicera morrowi*.)  
MORROW HONEYSUCKLE. Yellow fruited.  
TATARIAN HONEYSUCKLE. (*Lonicera tatarica*.)  
WHITE TATARIAN HONEYSUCKLE. (*Lonicera tatarica alba*.)

## Philadelphus—Mock Orange

SWEET MOCKORANGE. (*Philadelphus coronarius*.)  
An old time shrub of upright growth. Flowers are creamy-white, very fragrant.  
GOLDEN MOCKORANGE. (*Philadelphus coronarius aureus*.)  
BIG SCENTLESS MOCKORANGE. (*Philadelphus grandiflorus*.)  
(*Philadelphus virginial*.) A new, choice, fragrant variety, with large, creamy-white flowers.

## Physocarpus—Ninebark

COMMON NINEBARK. (*Physocarpus opulifolius*.)  
GOLDEN NINEBARK. (*P. opulifolius aureus*.)



The Beautiful Hydrangea

EUROPEAN ELDER. (*Sambucus nigra*.)  
GOLDEN EUROPEAN ELDER. (*S. nigra aurea*.)

## Salix—Willow

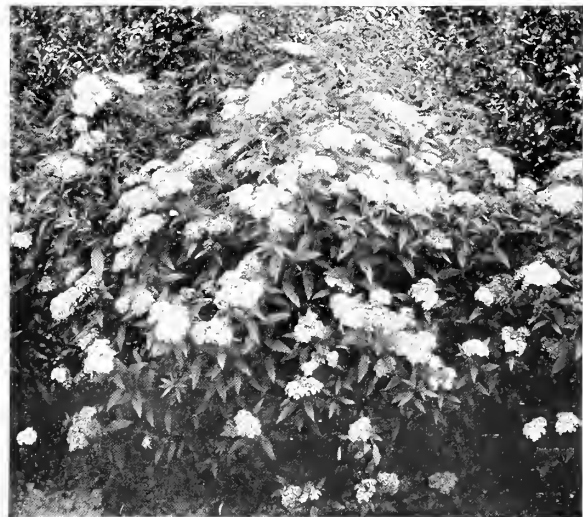
ROSEMARY WILLOW. (*S. incana rosmarinifolia*.)

## Spiraea—The Spireas

GARLAND SPIREA. (*Spiraea arguta*.)  
BILLIARD SPIREA. (*Spiraea billiardi*.)  
ANTHONY WATERER SPIREA. (*S. bumalda*.)  
MEADOW SPIREA. (*Spiraea callosa alba*.)  
STRIPED SPIREA. (*Spiraea superba*.)  
VAN HOUTTE SPIREA. (*Spiraea vanhouttei*.) One of the finest spireas. The entire bush is covered with dense clusters of exquisite white flowers.  
THUNBERG SPIREA. (*Spiraea thunbergi*.)

## Stephanandra

CUTLEAF STEPHANANDRA. (*S. flexuosa*.)



The charming Spirea Anthony Waterer.

## Prunus

PURPLELEAF PLUM. (*Prunus pissardi*.)

## Rhamnus

CAROLINA BUCKTHORN. (*Rhamnus caroliniana*.)  
COMMON BUCKTHORN. (*Rhamnus cathartica*.)



Mock Orange

JETBEAD. (*Rhodotypos kerrioides*.) A distinct and handsome shrub bearing pure-white flowers in profusion.

## Rhus—Sumac

FRAGRANT SUMAC. (*Rhus canadensis*.)  
SHINING SUMAC. (*Rhus copallina*.)  
COMMON SMOKETREE. (*Rhus cotinus*.)  
SMOOTH SUMAC. (*Rhus glabra*.)

## Ribes—Currant

SLENDER GOLDEN CURRANT. (*Ribes aureum*.)

## Rosa—The Shrubby Roses

RUGOSA ROSE. (*Rosa rugosa*.) Sturdy bushes, with dark, rich foliage. Large, fragrant, single and semi-double flowers. In variety.  
HUGONIS ROSE. (*Rosa hugonis*.)  
JAPANESE ROSE. (*Rosa multiflora*.)  
PRAIRIE ROSE. (*Rosa setigera*.)

## Sambucus—The Elderberry

AMERICAN ELDER. (*Sambucus canadensis*.)  
CUTLEAF AMERICAN ELDER. (*Sambucus canadensis acutiloba*.)



Weigela Rosea

**Symphoricarpos—Snowberry**

- COMMON SNOWBERRY. (*Symphoricarpos racemosus*.)
- CORALBERRY SNOWBERRY. (*Symphoricarpos vulgaris*.)

**Syringa—The Lilacs**

- CHINESE LILAC. (*Syringa chinensis*.)
- HIMALAYAN LILAC. (*Syringa emodi*.)
- PERSIAN LILAC. (*Syringa persica*.)
- WHITE PERSIAN LILAC. (*Syringa persica alba*.)
- LATE LILAC. (*Syringa villosa*.)
- COMMON LILAC. (*Syringa vulgaris*.) One of the old favorites. Beautiful clusters of fragrant lavender flowers.
- COMMON WHITE LILAC. (*Syringa vulgaris alba*.)
- HYBRID LILAC. The new garden lilac bearing immense trusses of fragrant flowers, some single and many double and semi-double varieties.
  - Charles X. Single; purplish-red.
  - Dr. Levaniski. Double purple.
  - Ludwig Spaeth. Deep purplish-red.
  - Michel Buchner. Double pale lilac.
  - Marie Legraye. Pure-white; fragrant.
  - Mme. Casimir Perier. Double white flowers in medium size clusters.
  - Paul Hariot. Double; red.
  - Pres. Grevy. Double; purplish lilac.

**Tamarix—The Tamarix**

- AFRICAN TAMARIX. (*Tamarix africana*.) Panicles of feathery pink flowers.
- FRENCH TAMARIX. (*Tamarix gallica*.) The pink flower racemes are larger than those of other kinds.
- ODESSA TAMARIX. (*Tamarix odessana*.) Decidedly bluish with open intricate texture.

**Vaccinium—Blueberry**

HIGHBUSH BLUEBERRY. (*Vaccinium corymbosum*.) A handsome shrub with blue-black edible berries. Thrives best in moist places and peaty acid soils.

**Viburnum—The Viburnums**

- AMERICAN CRANBERRYBUSH. (*Viburnum americanum*.)
- WHITE-ROD. (*Viburnum cassinoides*.) White flowers followed by red berries.
- ARROWWOOD. (*Viburnum dentatum*.)
- WAYFARING-TREE. (*Viburnum lantana*.)
- NANNYBERRY. (*Viburnum lentago*.) Leaves bronzy when young. The flowers are creamy-white, followed by clusters of dark blue berries.
- EUROPEAN CRANBERRYBUSH. (*Viburnum opulus*.) Upright, spreading shrub with white flowers and vivid red berries.
- DWARF CRANBERRYBUSH. (*Viburnum opulus nanum*.)
- SNOWBALL BUSH. (*Viburnum opulus sterile*.)
- SIEBOLD VIBURNUM. (*Viburnum sieboldi*.) The leaves are large, rich green, and glossy.
- JAPANESE SNOWBALL. (*Viburnum tomentosum plicatum*.)

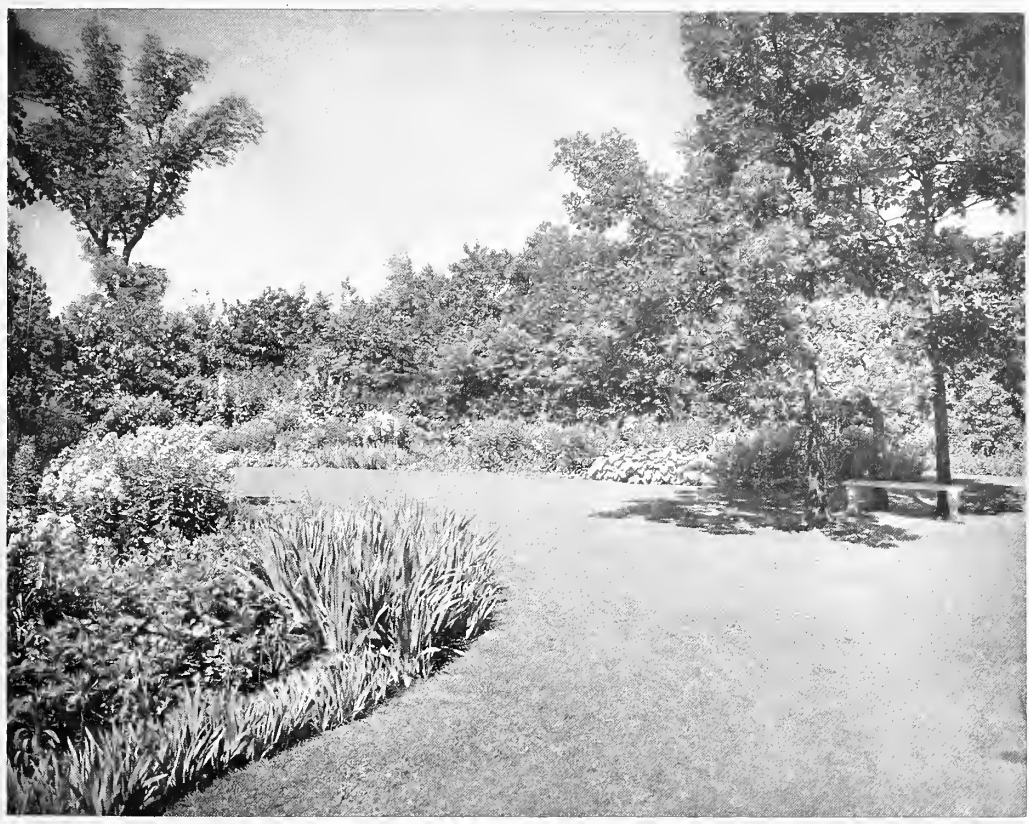
**Weigela—The Weigelas**

- ROSE WEIGELA. (*Weigela amabilis*.)
- SNOW WEIGELA. (*Weigela candida*.) Flowers pure white.
- EVA RATHKE WEIGELA. (*Weigela Eva Rathke*.) Flowers deepest carmen-crimson with prominent yellow stamens.
- PINK WEIGELA. (*Weigela rosea*.) Deep rose-pink.
- VARIEGATED WEIGELA. (*Weigela variegata*.) An interesting form with variegated leaves.



*Viburnum lantana*.

The berries of the Wayfaring-Tree are attractive to birds.



The perennial border, if carefully planned, can be made a veritable paradise of color and loveliness all through the growing season.

## HARDY PERENNIALS



**T**O ALL lovers of flowers—and who is not—the hardy perennials appeal very strongly, because during the whole flowering season there is not a time in which some of them are not in bloom, and they reappear year after year, blooming freely and requiring very little attention and protection.

For lovers of spring flowers—summer flowers, or autumn flowers, there are varieties without end, enough to have seasonal gardens or borders of all-season beauty. Perennials should rightfully form the backbone of all flower planting with possibly a few bulbs and annuals worked in to complete the effect.

Gardens in particular require careful selection and arrangement to get harmony of color and beautiful flowering effects. Any of the perennials we offer will delight you with their flower but a flower garden or border skillfully planned by our experts will give you the utmost in enjoyment. Our strong, well rooted plants make a showing of flowers the first year.

The following list of perennials is a partial list of the varieties we grow.

**ANTHEMIS tinctoria.** Yellow Camomile.

**ALYSSUM saxatile.** Goldentuft.

**ANEMONE japonica.** Japanese Anemone. Rose.

**ARABIS alpina.** Alpine Rockcress. White.

**ARMERIA maritima.** Common Thrift. Pink.

**AQUILEGIA.** Columbine. Old garden favorites.

**ARTEMISIA lactiflora.** White Mugwort.

**ASTER** in variety. The perennial or hardy Aster.

**CALTHA palustris.** Marshmarigold.

**CAMPANULA carpatica.** Carpathian Bellflower.

**CAMPANULA medium.** Canterbury-Bells.

**CAMPANULA pyramidalis.** Chimney Bellflower.

**CAMPANULA rotundifolia.** Harebell.

**CERASTIUM tomentosum.** Snow-in-Summer.

**CENTAUREA macrocephala.** Globe Centaurea.

**CHELONE lyoni.** Pink Turtlehead.

**COREOPSIS grandiflora.** Big Coreopsis.

**CHRYSANTHEMUM Maximum.** Shasta Daisy.

**CHRYSANTHEMUM.** Hardy garden varieties.

**DELPHINIUM hybrid.** Various shades.

**DELPHINIUM belladonna.** Light blue.

**DELPHINIUM formosum.** Hardy Larkspur.

**DIANTHUS heddewigi.** Heddewig Pink.

**DIANTHUS barbatus.** Sweet-Williams.

**DICENTRA spectabilis.** Bleedingheart.

**DIGITALIS purpurea.** Common Foxglove.

**FUNKIA caerulea.** Blue Plantainlily.

**FUNKIA variegata.** Variegated Plantainlily.

GAILLARDIA grandiflora. Blanket flower.  
 GERANIUM ibericum. Iberian Cranesbill. Blue.  
 GEUM coccineum. Chiloë Avens. Double red.  
 FESTUCA glauca. Blue Fescue Grass.  
 GYPSOPHILA paniculata. Babysbreath.  
 HELENIUM autumnale. Common Sneezeweed.  
 HELENIUM Riverton Beauty. Yellow, black center.  
 HELIANTHEMUM. Sunrose. Mixed colors.  
 HELIANTHUS maximiliani. Maximilian Sunflower.  
 HEMEROCALLIS. Daylily. Yellow, orange.  
 HYPERICUM moserianum. Goldflower.  
 HEUCHERA sanguinea. Coral bells.  
 HOLLYHOCKS. The old-time favorites.  
 HIBISCUS. Rosemallow. Various shades.  
 IBERIS sempervirens. Evergreen Candytuft.  
 IRIS cristata. Crested Iris. Light blue.  
 IRIS pseudacorus. Yellowflag Iris.  
 IRIS pumila. Crimean Iris. Various.  
 IRIS kaempferi. Japanese Iris. Various.  
 IRIS germanica. German Iris. Various colors.  
 LOBELIA cardinalis. Cardinal flower.  
 LIATRIS pycnostachya. Cattail Gayfeather.  
 LILIES. We offer the choicest of the hardy varieties.  
 LINUM perenne. Perennial Flax.  
 LUPINUS polyphyllus. Washington Lupine.  
 LYCHNIS chalconica. Maltese Cross.  
 LYTHRUM. Rosy Loosestrife.  
 MERTENSIA. Bluebells. Attractive blue.  
 MONARDA didyma. Oswego Beebalm. Red.  
 MYOSOTIS alpestris. Alpine Forget-me-not.  
 MYOSOTIS palustris semperflorens. Forget-me-not.  
 NEPETA mussini. Groundivy.

OENOTHERA. Evening-Primrose, Sundrops.  
 PAPAVER orientale. Oriental Poppy.  
 PENTSTEMON. Beard Tongue. Scarlet.  
 PEONIES. We offer the best varieties in white, red, and the different shades of pink.  
 PHLOX. White with red eye, white, pink varieties, salmon pink, lavender, red.  
 PHLOX amoena. Bright pink flowers.  
 PHLOX subulata rosea. Red Moss Phlox.  
 PHLOX subulata alba. White Moss Phlox.  
 PHLOX subulata lilac. Lilac Moss Phlox.  
 PHYSALIS francheti. Lantern Groundcherry.  
 PLUMBAGO larpentae. Blue Leadwort.  
 POLEMONIUM caeruleum. Greek-Valerian. Blue.  
 RUDBECKIA maxima. Great Cone flower. Yellow.  
 RUDBECKIA purpurea. Purple cone flower.  
 RUDBECKIA Goldenglow. Golden yellow.  
 SALVIA azurea. Azure Sage. Sky-blue.  
 SAXIFRAGA cordifolia. Heartleaf Saxifrage.  
 SCABIOSA caucasica. Pin-cushion Flower.  
 SILENE schafta. Schafta Catchfly.  
 SEDUM. Stonecrop. Good for the Rockery.  
 SEMPERVIVUMS. Houseleek. A rockery plant.  
 STATICE latifolia. Sea Lavender.  
 STOKESIA cyanea. Cornflower aster. Blue.  
 TRITOMA pfitzeriana. Bonfire Torchlily.  
 TROLLIUS. Globeflower. Yellow.  
 TUNICA saxifraga. Saxifraga Tunic flower.  
 VALERIANA officinalis. Hardy garden Heliotrope.  
 VERONICA. Speedwell. Shades of blue.  
 VIOLA. Violet. Various shades.  
 YUCCA. Adam's Needle. White flowers.



Among the perennials are found many rock loving plants which are needed in all rock treatments.  
 Our landscape craftsmen excel in the design and construction of rock gardens.  
 Steps at the home of Mr. Buskirk, on the nursery grounds.



## EVERGREEN SHRUBS----

**T**HIS group contains some of the most useful plants, not only because of their evergreen foliage, but many of them are highly prized flowering shrubs; very useful for foundation planting, for filling in beds of evergreen plantings, and for specimen use.

**AZALEA AMOENA.** (*Rhododendron obtusum amoenum.*) Magenta color flowers in May.

**GLOSSY CHINESE ABELIA.** (*Abelia rupestris grandiflora.*) Arching branches that bear nearly evergreen shining leaves and pinkish-white flowers.

**BOX.** (*Buxus.*) A familiar old plant with small, dark-green leaves, always fresh and glossy. Stands shearing.

**ROSE DAPHNE.** (*Daphne cneorum.*) A prostrate evergreen plant with small pink fragrant flowers in May.

**WINTERCREEPER.** (*Euonymus radicans.*)

**GLOSSY WINTERCREEPER.** (*Euonymus radicans carrierei.*)

**VARIEGATED EVERGREEN BITTERSWEET.** (*Euonymus radicans variegata.*)

**BIGLEAF WINTERCREEPER.** (*Euonymus radicans vegetus.*)

**SIEBOLD WINTERCREEPER.** (*Euonymus sieboldi.*)

**AMERICAN HOLLY.** (*Ilex opaca.*) Our native holly so familiar in Christmas decorations.

**KALMIA, MOUNTAIN-LAUREL.** (*Kalmia latifolia.*) A profuse bloomer in May and early June.

**OREGON HOLLYGRAPE.** (*Mahonia aquifolium.*) Resembles holly in its foliage and is a fine evergreen plant for foundation and mass plantings.



The Broadleaf evergreen shrubs are excellent subjects for foundation planting. The *Rhododendron* is especially attractive in some such situation as this.

**CAROLINA RHODODENDRON.** (*Rhododendron carolinianum.*) A very showy, early blossoming, hardy rhododendron, small and compact.

**CATAWBA RHODODENDRON.** (*Rhododendron catawbiense.*) Very hardy, very handsome, medium size. Late flowering, large round glossy showy blossoms. Rich dark green leaves.

**ROSEBAY RHODODENDRON.** (*Rhododendron maximum.*) Very handsome variety, delightful for its color.

**JAPANESE SPURGE.** (*Pachysandra terminalis.*) An attractive evergreen plant with bright green glossy foliage and trailing habit.



The hardy grasses are valuable planted as specimens or massed in beds. They are particularly attractive in the border or along the edge of pools.

## HARDY ORNAMENTAL GRASSES

**GIANT REED.** (*Arundo donax.*) An exceptional strong-growing ornamental grass attaining a height of from ten to twelve feet, with broad green foliage. Beautifully striped with white.

**GOLDEN ZEBRA GRASS.** (*Eulalia japonica zebrina.*) The long plants of this variety are marked with broad yellow band across the leaves.

**MAIDEN GRASS.** (*Eulalia japonica gracillima.*) Another variety of the Japanese grass with much narrower leaves. Two to three feet.

**STRIPED EULALIA GRASS.** (*Eulalia japonica variegata.*) Very ornamental; long narrow striped leaves.

**HARDY FOUNTAIN GRASS.** (*Pennisetum japonicum.*) This variety grows four feet high, foliage narrow and bright green, while the cylindrical flower-heads are tinged with bronze-purple.

**RIBBON GRASS.** (*Phalaris arundinacea variegata.*) Large variegated foliage; an excellent grass for bordering large beds. Twelve to fifteen inches.

**BLUE LYME GRASS.** (*Elymus glaucus.*) A handsome grass with narrow silver foliage; four feet.

## ROSES for the GARDEN and BORDER



OMEHOW Roses seem to be the most beautiful of all the garden flowers and they can be easily grown at home. Give them plenty of rich soil and sunlight and the amount of bloom you will get will surprise you.

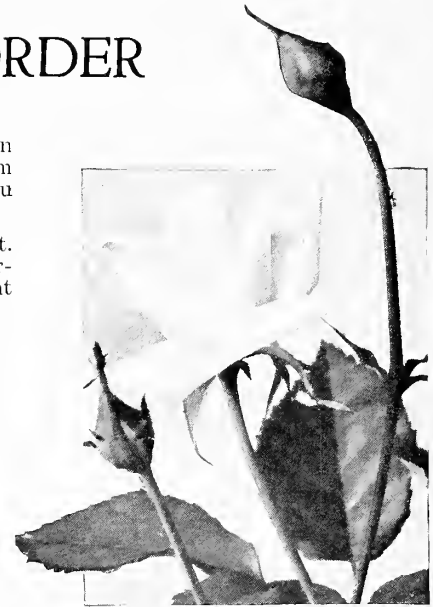
**The Rose Garden.** Gardens of Roses offer no end of delight. Our sturdy plants are excellent subjects for this treatment. Let us arrange a rose planting for you. We will also prepare the beds and plant them. We know this method brings results that please.

### HYBRID PERPETUAL ROSES

Frau Karl Druschki.  
General Jacqueminot.  
Mrs. John Laing.  
Clio.  
Magna Charta.  
Paul Neyron.  
Ulrich Brunner.  
Capt. Hayward.  
Black Prince.  
Crested Moss.  
Duke of Edinburgh.

### TEA AND HYBRID TEAS

General MacArthur.  
Grus an Teplitz.  
Killarney.  
Los Angeles.  
Mrs. Aaron Ward.  
Ophelia.  
Mad. Butterfly.  
Souvenir de Claudius Pernet.  
Soleil D'or.  
Mad. Harriot.  
Anna de Diesbach



Frau Karl Druschki.

### CLIMBING ROSES

American Beauty. Rich carmen.  
Aunt Harriet. Bright scarlet-crimson. Semi-double.  
Crimson Rambler. Crimson. Semi-double.  
Dorothy Perkins. Clear cherry-pink. Double.  
Hiawatha. Crimson. Single.  
Tausendschon. Pale cherry-pink. Double.  
White Dorothy Perkins. Pure white flowers.  
Silver Moon. Semi-double white and creamy flowers.  
Professor C. S. Sargent. Double. Yellow flowers.

### POLYANTHA OR BABY RAMBLER ROSES

Dwarf, bushy roses, seldom growing more than 18 inches high. Very hardy and very small flowers in large clusters, appearing all summer. They are ideal bedding plants; planted in masses they produce very desirable effects. We have these in choice varieties.

**Bush Roses.** The hardy bush roses are exceedingly attractive in the border and in combination with other shrubs. No collection is complete without a few from this group. See under shrubs.

## A WATER GARDEN ADDS ENJOYMENT



A quiet pool where the fragrance of the waterlily can be enjoyed.

SINCE the time of the early Egyptian gardens, which were the first gardens of history, pools have been regarded as one of the choicest features in garden development. The possibility for beauty achievement in their design is unlimited and their contribution to the pleasure and enjoyment of the owner is unsurpassed.

Around a pool there is peace and quiet which invites you to relax and rest. The reflections mirrored on the surface of the water are a constant delight. Water plants, the fragrant water-lily, and the floating lily pads intrigue the eye and lend charm to the picture.

The design of pools, their construction and furnishing of plants for them is one of our specialties. Let us help you plant your pool.

## CLIMBING and TRAILING VINES

**Q**UIET and unobtrusive beauty distinguishes many of the vines, and happily there is always some vine suitable for every situation. A brick or stone chimney or wall can be enhanced by the use of Engleman's Ivy or Boston Ivy, both varieties being the sort that clings to brick or stone.

The Clematis group, the Honeysuckles, Wisteria and Trumpet Creeper are noted for their attractive flowers. Climbing Bittersweet bears the cheerful orange berries so popular for winter bouquets. Matrimony vine, a splendid shrubby vine for growing on slopes, has attractive flowers and luscious red fruit. Grapevines and Dutchman's Pipe are valuable for heavy foliage effects.

No home is really complete without a few vines—and where there are garden arbors and trellises, vines are indispensable.

**VIRGINIA CREEPER.** (*Ampelopsis quinquefolia*.) Attractive leaves which turn gorgeous crimson in autumn.

**JAPANESE CREEPER or BOSTON IVY.** (*Ampelopsis tricuspidata veitchii*.) The tendrils hold tenaciously to brick and stone.

**CHINESE TRUMPETCREEPER.** (*Bignonia grandiflora*.) Scarlet flowers in July.

**TRUMPETCREEPER.** (*Bignonia radicans*.) One of the handsomest climbing vines.

**AMERICAN BITTERSWEET.** (*Celastrus scandens*.) Orange berries and scarlet arils.

**ORIENTAL BITTERSWEET.** (*Celastrus orbiculatus*.)

**SWEET AUTUMN CLEMATIS.** (*Clematis paniculata*.) Masses of fragrant white flowers.

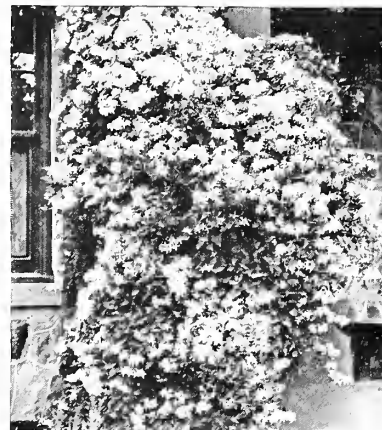
**JACKMAN CLEMATIS.** (*Clematis jackmani*.) Deep velvety purple with a rib bar down the center.

**ENGLISH IVY.** (*Hedera helix*.) A familiar evergreen vine, with thick, dark-green foliage.

**WINTERCREEPER.** (*Euonymus radicans*.)

**GLOSSY WINTERCREEPER.** (*Euonymus radicans carrierei*.)

**VARIEGATED WINTERCREEPER.** (*Euonymus radicans variegata*.)



*Clematis paniculata.*

**BIGLEAF WINTERCREEPER.** (*Euonymus radicans vegetus*.)

**JAPANESE HONEYSUCKLE.** (*Lonicera japonica*.)  
**HALL JAPANESE HONEYSUCKLE.** (*Lonicera japonica halliana*.)

**CHINESE MATRIMONY-VINE.** (*Lycium chinese*.)

**COMMON MATRIMONY-VINE.** (*Lycium halimifolium*.)

**COMMON PERIWINKLE.** (*Vinca minor*.)

**CHINESE WISTERIA.** (*Wisteria sinensis*.)

**WHITE CHINESE WISTERIA.** (*W. sinensis alba*.)

**LONGCLUSTERED WISTERIA.** (*Wisteria multi-juga*.)

## LET US HELP YOU MAINTAIN YOUR GROUNDS

*Our experienced gardeners will care for your perennial and annual gardens and lawns, look after your window boxes and trim your trees and shrubs at the right time.*

**N**O LONGER need you wonder where you can get help in the care of your place. The Independence Nurseries Co. maintains a service department for just this sort of thing. Experienced gardeners are always ready at your call to come and put your gardens, borders and window boxes in shape.

This is a valuable service which many home owners have found to be the solution of their problems. Your home will be among those most attractive if the grounds are kept up properly.

### Tree Trimming Service

Trees need to be trimmed to keep them in shape and keep them healthy. We have a special crew to do this work, men who do the work right and at reasonable prices. Shrubbery also needs an occasional pruning. When this is done right it is of great benefit and the attractiveness of the shrub will be enhanced rather than destroyed.

### Call Us Today

And let us explain about our services. We work either on a time or contract basis. We will be glad to talk over your needs with you.



### Lawn Service

A beautiful lawn adds infinitely much to the good appearance of the home. Lawns must be fed and cared for if you want a beautiful turf. Soil requirements vary and each lawn needs its own special treatment. Your lawn will quickly respond to the care we will give it. Let us show you.

## GROW YOUR OWN FRUIT



THERE is real satisfaction in picking fruit grown on your own place. It tastes better and is better. And, more than this, fruit trees, with their fragrant blossoms are a pleasing ornament to any place.

**Apples.** Early summer varieties for that first green apple pie; fall apples and winter apples for long season enjoyment should all be grown.

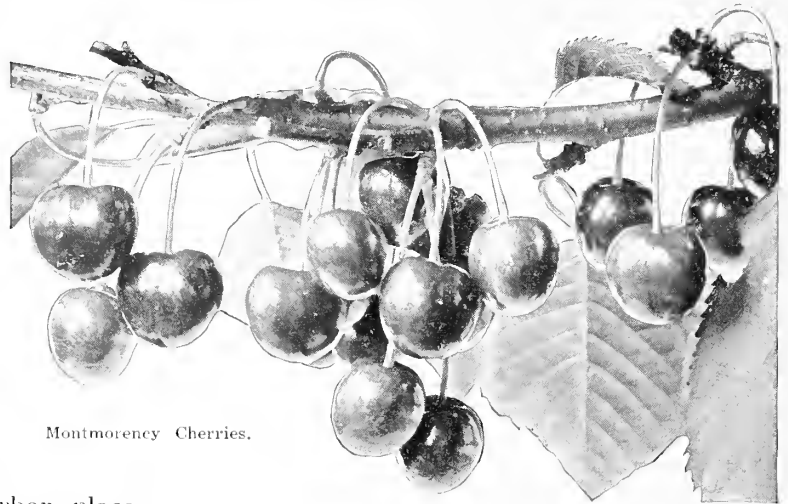
**Pears.** Standard varieties where there is space, and they really take little room, and Dwarf sorts for the small suburban place are available in specimen stock of the best varieties.

**Plums.** The "easy-to-grow fruit", can even be grouped in the border. Their flowers and delicious edible fruit make them well worth while. All the best varieties.

**Peaches.** Worth-while for their blossoms alone. We have choice plants.

**Cherries.** Almost a sure yearly bearer. Sweet varieties make luscious eating and the sour varieties provide the family with fresh cherry pie.

**Grapes.** Every man's fruit. Grows almost anywhere and takes so little space. We grow



Montmorency Cherries.

black or purple, red and white or yellow varieties in both early and late sorts.

The small fruits—Strawberries, Raspberries, Blackberries, Currants, and Gooseberries, should be in every service garden. Our varieties yield big, delicious fruits in abundance.

### PLAN A FRUIT GARDEN

We will help you plan a fruit garden for all year enjoyment. Small expense with large returns is characteristic of fruit planting.

## WATER LILIES *and* AQUATIC PLANTS



It is easy to grow water plants. Even a tub will do for making a small water garden. Where space permits, a larger pool enables one to have a greater variety of these most interesting plants. We can help you have a water garden in which you will take great pleasure.

*Everything for the water garden  
can be had at Independence.*

The growing of waterlilies and aquatic plants is one of our specialties. Beautiful hardy lilies, day and night blooming tropical lilies and the choice Egyptian lotus are among the most popular. People come from miles around to see our aquariums of fancy fishes.

### SEND *for* CATALOG

You will be delighted with the possibilities in growing these attractive plants. Our catalog beautifully illustrates in color many of the varieties we grow. It is a store house of valuable information about water plants and fancy fishes. Send for it today, it is yours for the asking.

11



POST CARD

Place  
Two  
Cent  
Stamp  
Here

The Independence Nurseries Co.

Independence

*Landscape Department*

Ohio

*Yes,* We expect to make some improvements in our grounds and would appreciate having your landscape man call on us at his convenience without any obligation on our part.

Name .....

Street .....

City .....

---

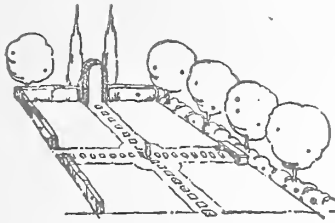
*I am interested in the items indicated by check mark below:*

- A general planting around my home.
- Rearranging and adding to the plantings I now have.
- The planting of evergreens.
- I should like to know about your lawn service —window box service—and tree trimming service.
- I am interested in water plants. Send me your catalogue.

Remarks .....

.....

.....



# INDEX



Abies .....	9	Crataegus .....	15	Katsura Tree .....	12	Rhamnus .....	17
Abelia .....	21	Currant .....	17	Kerria .....	16	Rhododendron .....	21
Acer .....	12	Cydonia .....	15	Larkspur .....	19	Rhodotypos .....	17
Aesculus ..	12	Daphne .....	21	Lavender, Sea .....	20	Rhus .....	17
Allanthus .....	12	Delphinium .....	19	Liatris .....	20	Ribes .....	17
Almond, Flowering .....	14	Desmodium .....	15	Ligustrum .....	16	Roses .....	17, 22
Alyssum .....	19	Deutzia .....	13	Lilac .....	18	Rudbeckia .....	20
Amelanchier .....	14	Dianthus .....	19	Lily .....	20	Salix .....	13, 17
Amygdalus .....	14	Dicentra .....	19	Linden .....	13	Salvia .....	20
Anemone .....	19	Diervilla .....	16	Linum .....	20	Sambucus .....	17
Anthemis .....	19	Digitalis .....	19	Liriodendron .....	13	Saxifraga .....	20
Aquilegia .....	19	Dogwood .....	12, 15	Liquidambar .....	13	Scabiosa .....	20
Arabis .....	19	Elaeagnus .....	16	Lobelia .....	20	Shasta Daisy .....	19
Aralia .....	14	Elderberry .....	17	Lonicera .....	16, 23	Sea Buckthorn .....	16
Arborvitae .....	11	Elm .....	13	Lupine .....	20	Sedum .....	20
Armeria .....	19	English Ivy .....	23	Lupinus .....	20	Sempervivums .....	20
Aronia .....	14	Euonymus .....	16	Lychnis .....	20	Shadblow .....	14
Artemisia .....	19	Evergreens .....	9-11, 21	Lythrum .....	20	Shrubs .....	14-18
Ash .....	13	Evergreen Shrubs .....	21	Magnolia .....	13	Silene .....	20
Aster .....	19	Exochorda .....	16	Maidenhair Tree .....	13	Snowberry .....	18
Azalea .....	14	Fagus .....	12	Mallow .....	20	Sorbus .....	13
Baby's Breath .....	20	Festuca .....	20	Malus .....	13	Speedwell .....	20
Barberry .....	15	Firs .....	9	Maple .....	12	Spicebush .....	14
Beautyberry .....	15	Forget-me-not .....	20	Matrimony Vine .....	23	Spiraea .....	17
Beech .....	12	Forsythia .....	16	Mertensia .....	20	Spruces .....	10
Berberis .....	15	Foxglove .....	19	Mock Orange .....	17	Statice .....	20
Benzoin .....	14	Fraxinus .....	13	Monarda .....	20	Stephanandra .....	17
Betula .....	12	Fruits .....	24	Morus .....	13	St. Johnswort .....	16
Birches .....	12	Funkia .....	19	Mulberry .....	13	Stokesia .....	20
Bittersweet .....	23	Gaillardia .....	20	Myosotis .....	20	Sumac .....	17
Bleeding Heart .....	19	Geranium .....	20	Nepeta .....	20	Summersweet .....	15
Bluebells .....	20	Geum .....	20	Ninebark .....	17	Sweet Gum .....	13
Blueberry .....	18	Ginkgo .....	13	Nut Trees .....	13	Sweetshrub .....	15
Blue Pescue Grass .....	20	Gleditschia .....	13	Oaks .....	13	Symphoricarpos .....	18
Buckthorn .....	17	Golden Bell .....	16	Oenothera .....	20	Syringa .....	18
Buddleia .....	15	Gysophila .....	20	Olive, Russian .....	16	Tamarix .....	18
Burning Bush .....	16	Hamamelis .....	16	Ornamental Grasses .....	21	Taxus .....	11
Bushclover .....	15	Hawthorns .....	15	Papaver .....	20	Thuya .....	11
Bush-honeysuckle .....	16	Hazelnut .....	15	Pea Tree .....	15	Tilia .....	13
Butterflybush .....	15	Helenium .....	20	Pearlbush .....	16	Trees, Deciduous .....	12, 13
Buxus .....	21	Helianthemum .....	20	Pentstemon .....	20	Tree of Heaven .....	12
Caltha .....	19	Helianthus .....	20	Peonies .....	20	Trees, Fruit .....	24
Callicarpa .....	15	Hemorocallis .....	20	Perennials .....	19, 20	Tritoma .....	20
Calycanthus .....	15	Hemlock .....	11	Periwinkle .....	23	Trollius .....	20
Caragana .....	15	Heuchera .....	20	Philadelphus .....	17	Trumpet Creeper .....	23
Carpius .....	12	Hibiscus .....	16, 20	Phlox .....	20	Tsuga .....	11
Catalpa .....	12	Hippophae .....	16	Physalis .....	20	Tulip Tree .....	13
Cedars .....	9	Holly .....	21	Physocarpus .....	17	Tunica .....	20
Centaurea .....	19	Hollyhock .....	20	Picea .....	10	Ulmus .....	13
Cerastium .....	19	Honey Locust .....	13	Pines .....	10	Vaccinium .....	18
Cercidiphyllum .....	12	Honeysuckle .....	16, 23	Planetree .....	13	Valeriana .....	20
Cercis .....	15	Hornbeam .....	12	Platanus .....	13	Veronica .....	20
Chelone .....	19	Horse Chestnut .....	12	Plumbago .....	20	Viburnum .....	18
Chokeberry .....	14	Hydrangea .....	16	Polemonium .....	20	Vines .....	23
Chrysanthemum .....	19	Hypericum .....	16, 20	Poplar .....	13	Viola .....	20
Clematis .....	23	Iberis .....	20	Poppy .....	20	Virginia Creeper .....	23
Clethra .....	15	Iris .....	20	Populus .....	13	Weigela .....	18
Columbine .....	19	Japanese Creeper .....	23	Privet .....	16	Willow .....	13, 17
Coneflower .....	20	Japanese Spurge .....	21	Prunus .....	17	Wintercreeper .....	21, 23
Coral Bells .....	20	Jethead .....	17	Quercus .....	13	Wisteria .....	23
Coreopsis .....	19	Juniper .....	9	Quince .....	15	Witch-Hazel .....	16
Cornus .....	12, 15	Juniperus .....	9	Redbud .....	15	Yew .....	11
Corylus .....	15	Crataegus .....	15	Retinospora .....	10	Yucca .....	20
Cotoneaster .....	15	Currant .....	17				
Crab, Flowering .....	13	Cydonia .....	15				

*BUSKIRK'S*  
*THE INDEPENDENCE NURSERIES Co.*  
— OFFICE AND NURSERIES —  
INDEPENDENCE, OHIO